

What's Happening:

Most Owner furniture is installed, with a few pieces trickling in over the next weeks. Mechanical work continues in the welding lab with install of the main dust collection system, connecting the run of duct from inside the building to the actual unit sitting outside. The plumbing contractor continues with installation of compressed air piping and final drops. The electrical contractor is continuing finishes, final drops, and remaining low voltage work. Owner signage installs will be ongoing throughout the building in the weeks ahead. The vendor has completed installing the TV's, sound system in the Community Room. A few items of Owner equipment have been delivered for lab spaces, and more pieces of equipment are set to deliver over the ahead weeks.

Final site work and landscaping is underway, the irrigation system is currently being installed. Site prep of topsoil will take place over the ahead weeks to make ready for seeding and plantings. Asphalt topcoat has started on half of the parking lot on Friday, April 26th and the remaining half will complete the following week. Once paving is complete, final striping and signage will occur.



Components of the dust collection system being installed in the Welding & Metal Fab. Lab.



The Apprentice Classroom near its completed state with tables in place.



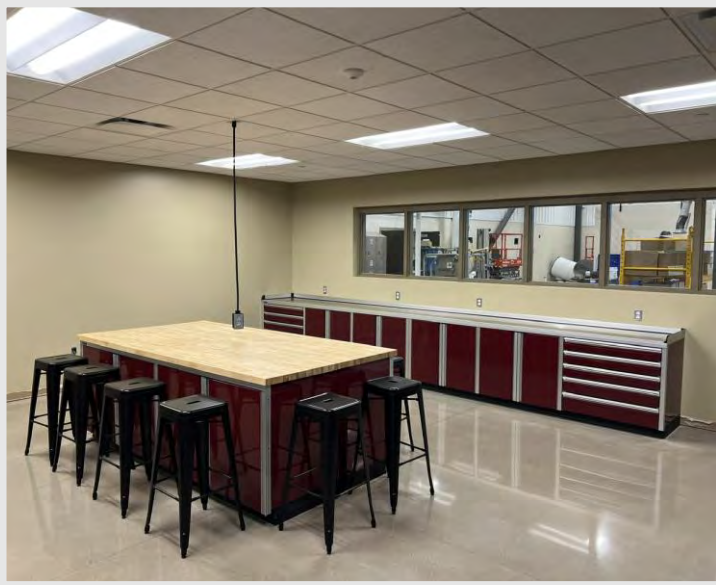
The first half of the parking lot receiving the asphalt topcoat on Friday, April 26th.

DID YOU KNOW?

Compressed air, which is routed throughout the lab spaces at the AMETA Center, will be used as an 'energy' source. This means that compressed air will be used to power air tools or lab equipment. Whether being used in countless industries or even our everyday lives – such as car or bike tires, compressed air is all around us!

Questions?

Project Manager, Matt McDonald / (608)-301-6169 / mmcdonald@findorff.com



The Metal Science Lab.



Equipment set into place in the Automation & Controls Lab.



Tables and chairs have been brought into the Community Room, and monitors were installed.

Questions?

Project Manager, Matt McDonald / (608)-301-6169 / mmcdonald@findorff.com