

## What's Happening:

The building moves closer to completion as finishes continue throughout the project! Final cleaning has kicked off in select areas, making rooms ready for the Owner's furniture install in the weeks ahead. Mechanical work continues in the Welding Lab, as final drops are coming down to welding booths. Also, mechanical system testing and balancing continues throughout the building to ensure efficient performance. The plumbing contractor continues the installation of welding gas piping and final drops to booths. Additionally, the remaining sinks were installed to countertops, and final caulking of fixture will occur over the weeks ahead. The electrical contractor is continuing finishes to devices and terminating low voltage data wiring. The fire protection contractor has completed install of the Clean Agent fire suppression system in the main Server Room. Findorff installed corner guards throughout the project, completed install of metal lockers, and continues door hardware installation.

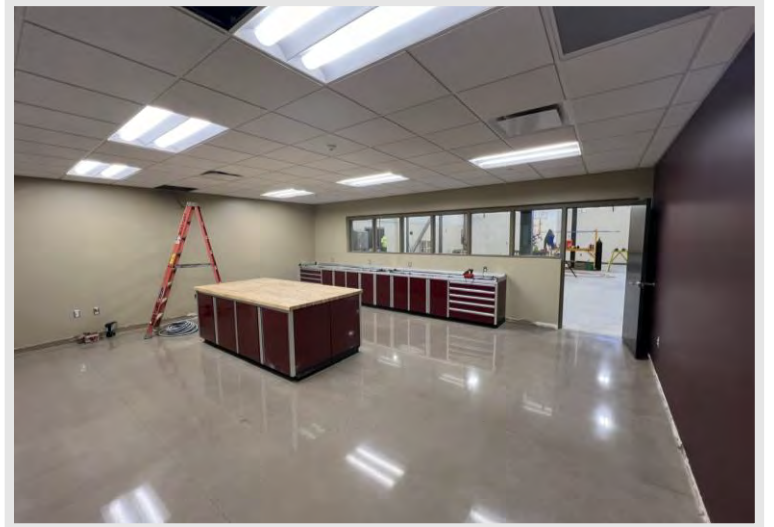
Parking lot lights have been turned on by the electrical contractor at the exterior. We await warmer weather for the remaining exterior work to continue, including the asphalt topcoat.



Slotted back shelf exhaust hoods are installed in the Grinding Room.



Rooms are looking sharp as final cleaning is starting throughout the project site in anticipation of furniture installation in the coming weeks.



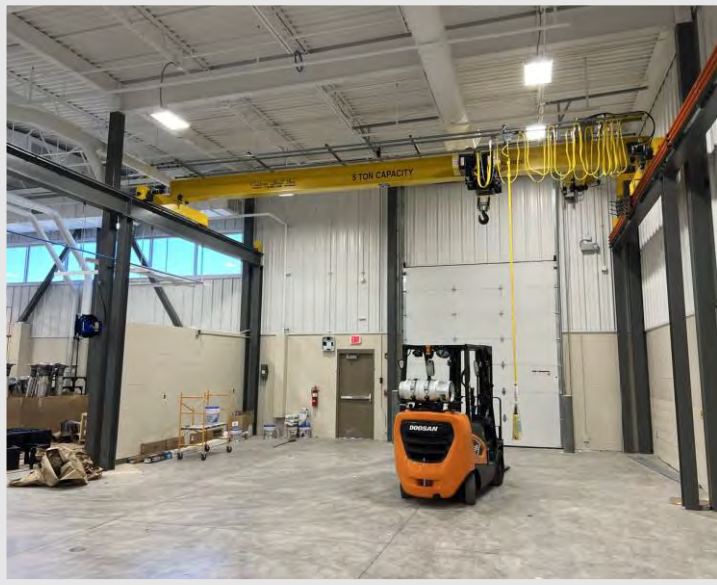
The Metal Science Lab's polished concrete floor was completed over the past week.

## DID YOU KNOW?

Slotted exhaust hoods, also known as fume hoods, seen in the Grinding Room are part of the dust collection system in the Welding Lab. They are used to capture fumes and dust produced by welding, grinding, and buffing – providing a safe environment. Slotted fume hoods are more energy efficient and cost effective due to the restrictive and faster airflow pattern generated.

## Questions?

Project Manager, Matt McDonald / (608)-301-6169 / [mmcdonald@findorff.com](mailto:mmcdonald@findorff.com)



Final connections and operational testing has completed the install of the bridge crane in the Welding Lab.



Weld gas piping continues in the Welding Lab and final drops have started to make there way down to mixing valves in each booth.



The Materials Lab had the polished concrete flooring completed over the past week.

## Questions?

Project Manager, Matt McDonald / (608)-301-6169 / [mmcdonald@findorff.com](mailto:mmcdonald@findorff.com)