

What's Happening:

Temporary power wiring has been removed throughout the building and all final light fixtures are turned on. The temporary heaters have been disconnected as the mechanical contractor has started the roof top units (RTUs) and are working on testing and balancing of these systems.

Mechanical, Electrical, Plumbing, and Fire Protection (MEPF) trades are continuing finishes to their systems. The plumber continues the compressed air install, and various fixtures around site. The electrician is continuing finishes to devices. The fire protection contractor is working to install the Clean Agent fire suppression system in the main Server Room. Findorff has been busy installing wood doors and hardware throughout the building and will soon transition to installing metal lockers in two labs. Lots of small details will trickle in to complete this project!

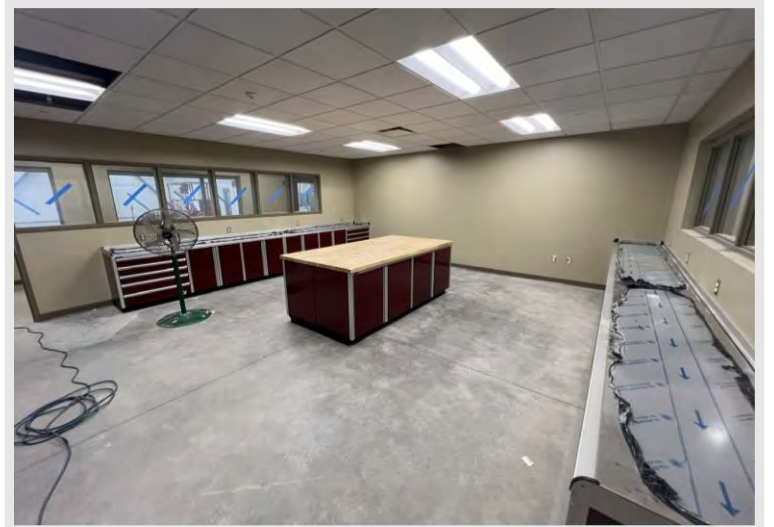
At the exterior, the Findorff job trailer was removed from site and the electrician will soon pull wire to parking lot lights, so they can be connected and turned on. Some topsoil has been brought around the site and placed to final grade, with more to come.



The operable partition was installed in the Community Room.



Glazing was installed at exterior storefront doors where heaters were previously routed.



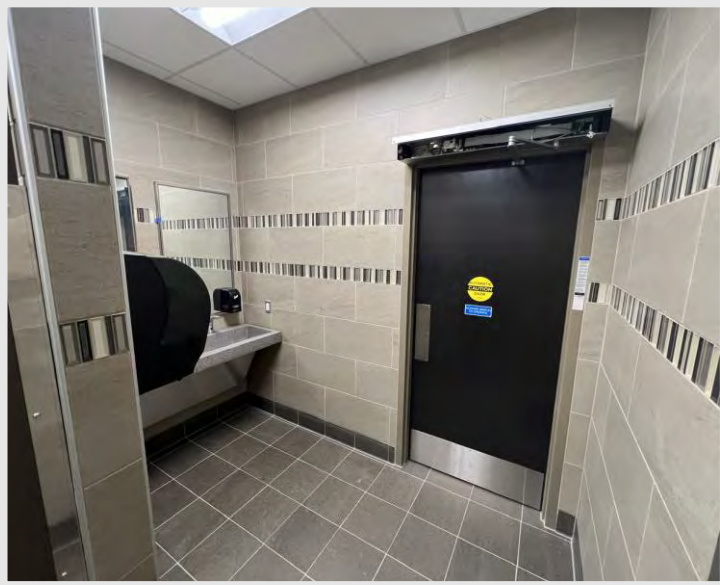
Ceiling light fixtures are active in the Metal Science Lab.

DID YOU KNOW?

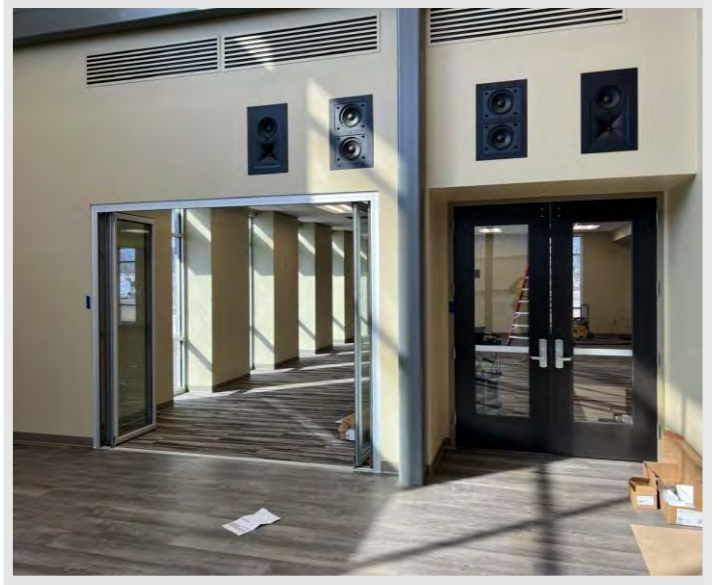
Testing and Balancing is done to heating, ventilation, and air conditioning (HVAC) systems to ensure to systems are operating optimally and that air is being distributed properly. Each room of a building has different calculated HVAC needs, and must be verified. Testing and Balancing helps to ensure efficient energy consumption and support a healthy lifespan of HVAC systems.

Questions?

Project Manager, Matt McDonald / (608)-301-6169 / mmcdonald@findorff.com



Auto operators are beginning to install throughout the site, as seen above the restroom door in the photo above.



Accordion glass doors (left) were installed by the glazer and wood doors and hardware (right) were installed by Findorff.



The Welding Lab roof deck is painted, the floor is sealed, and the lights are flipped on!

Questions?

Project Manager, Matt McDonald / (608)-301-6169 / mmcdonald@findorff.com