

## What's Happening:

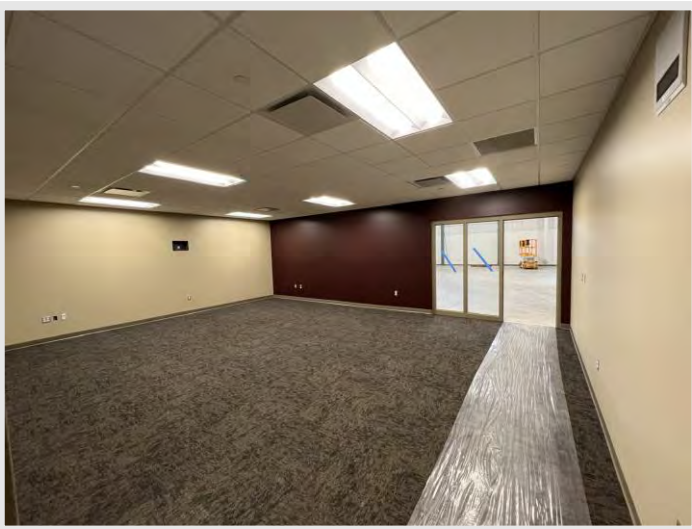
Work onsite has continued with a lot of finishes as we edge toward completion in the coming months!

The painter has worked to paint out the Welding Lab roof deck and exposed mechanicals over the past week. Shortly, they will have the concrete floor sealed in the Welding Lab so that Mechanical, Electrical, and Plumbing (MEP) trades can finalize their work in the space. MEP trades have worked through the Machine Tool and Automation Labs with miscellaneous finishes, and soon the compressed air piping will be installed by the plumber. Ceiling tile has been dropped throughout the building and only a few select areas remain that will be installed in the week ahead. Flooring has installed throughout the jobsite and only two rooms remain for install to complete.

Roof Top Units (RTU's) are being prepped to startup in the week ahead, and temporary heating units will be removed from the project. This will allow glazing to be installed at the two storefront entrances where temporary heat was routed. Also, Findorff will begin install of wood doors in the week ahead!



Mechanical and Electrical trades have worked their way through the Automation Lab, soon the Plumber will follow with compressed air install.



Flooring has been installed throughout the classrooms.



Notice the larger interior signage that has been installed in the Atrium.

## DID YOU KNOW?

Luxury Vinyl Tile or LVT is a common type of hard surface flooring and is seen throughout the AMETA Center site, most notably the Atrium! LVT can offer a look that mimics authentic wood or stone floors, while also providing a durable product that is easy to install and maintain.

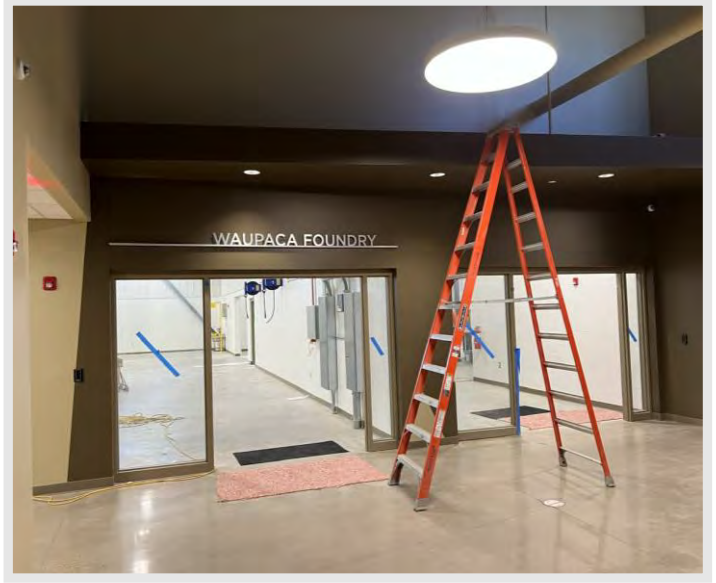
## Questions?

Project Manager, Matt McDonald / (608)-301-6169 / [mmcdonald@findorff.com](mailto:mmcdonald@findorff.com)





Trades are working towards making their final connections to data.



Interior signage has started to be placed in the building.



Flooring is complete throughout the student lounge area.

## Questions?

Project Manager, Matt McDonald / (608)-301-6169 / [mmcdonald@findorff.com](mailto:mmcdonald@findorff.com)