

## What's Happening:

The plumbing contractor has worked making final connections to equipment, installing fixtures in labs, and has started the compressed air piping in labs. The electrical contractor has been busy working throughout the building, nearly all lighting fixtures have been installed. They have continued terminating wiring into panels, installing electrical devices, and will soon start their install in the Automation Lab. The mechanical contractor is wrapping up their install of ductwork in the Welding & Metal Fab. Lab so that the painters can take over the space. The mechanical contractor is also working with the controls contractor to prepare the roof top unit's (RTU's) for startup in the months ahead. The painters have worked to mask off the Welding & Metal Fab. Lab and will begin painting the roof deck in the coming week, followed by sealing of the floor.

Now with temporary switchgear powering the lighting in the building, many acoustic ceiling tiles have been dropped ahead of the flooring installation. With most of the flooring down, the main corridor polished concrete complete, and the ceilings starting to close, we are brought closer to the final finishes.



The compressed air piping installation has kicked off in the Machine Tool Lab and will continue in the weeks ahead.



Flooring installation has taken place in the Community Room.



Exterior signage is starting to be installed around the building—above is the main entrance!

## DID YOU KNOW?

Polished concrete is a great way to showcase the construction materials put into a building, offering a durable finish. To take a concrete slab and make it a polished concrete floor, the concrete is grinded with equipment having an integral vacuum to prevent dust. Multiple passes are done on the floor, each with different levels of grit, like sandpaper. Next, the floor is chemically densified and hardened before polishing with a fine grit and being sealed.

## Questions?

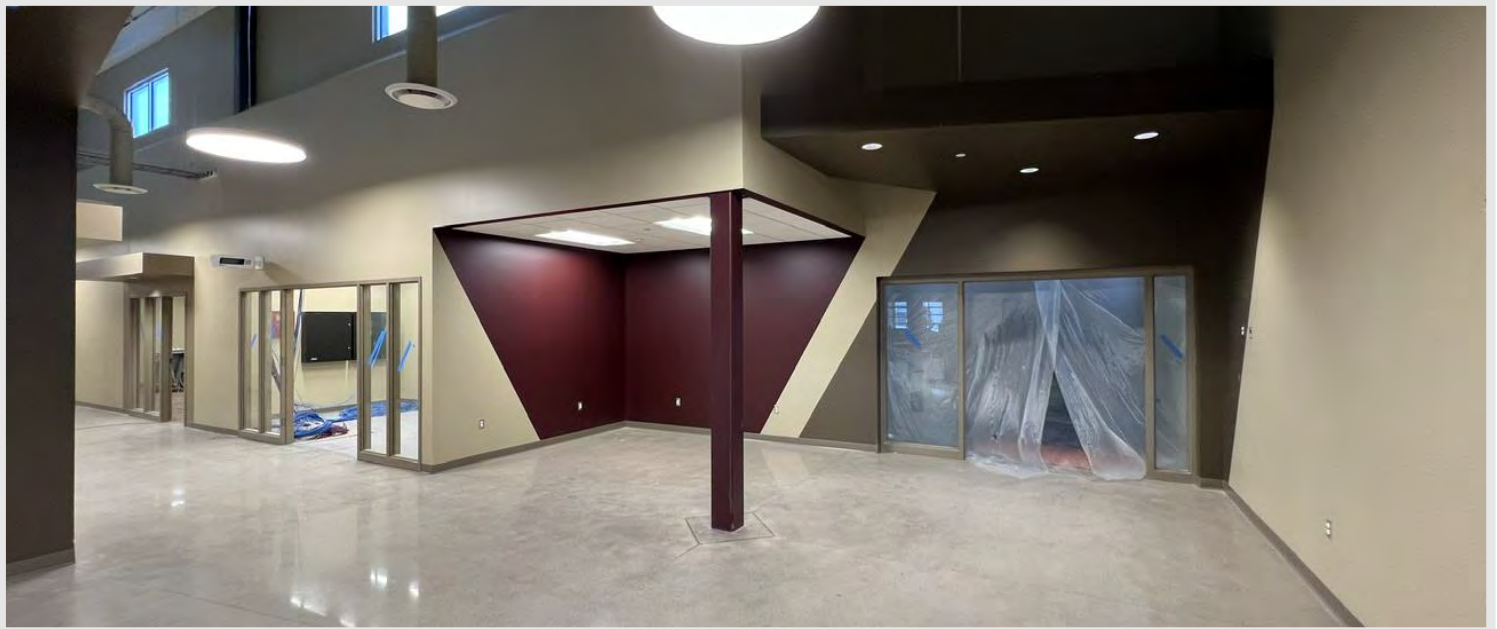
Project Manager, Matt McDonald / (608)-301-6169 / [mmcdonald@findorff.com](mailto:mmcdonald@findorff.com)



Plumbing fixtures were installed in the labs in the past week.



Notice the flooring that was installed throughout this corridor near the student lounge.



The main corridor polished concrete has completed, also notice the light fixtures are on with the temporary power in place.

## Questions?

Project Manager, Matt McDonald / (608)-301-6169 / [mmcdonald@findorff.com](mailto:mmcdonald@findorff.com)