

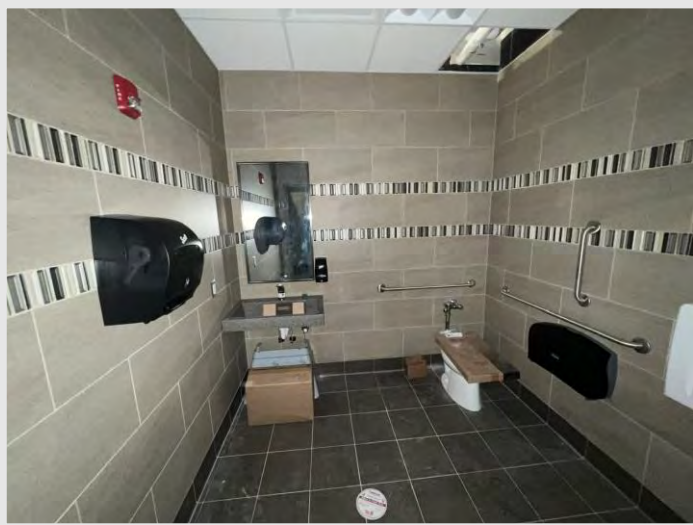
What's Happening:

Work continues progressing onsite – mechanical, electrical, and plumbing (MEP) installations are ongoing throughout the building. The electrical contractor has continued installing lighting fixtures, terminating wiring into panels, and recently installed the temporary switchgear for the project. The mechanical contractor continues to install ductwork in the Welding & Metal Fab. Lab – there is a significant amount of ductwork to be installed including the dust collection system ductwork. The plumbing contractor has continued insulating piping, making final connection to equipment, and installing vanities throughout the building.

Aluminum casework was installed throughout the building in the past week. Tectum panel installation and ceiling grid installation has completed throughout the building. The ACT border tiles have started to be installed throughout the building and soon install of all the ceiling tiles will kickoff, closing ceilings in the building. The painting contractor recently painted the entire roof deck of the Machine Tool Lab and will seal the floor in the space before preparing to paint the Welding & Metal Fab. Lab.



The Machine Tool Lab had the ceiling, and exposed mechanical, electric, plumbing, and fire protection components painted in the last week.



The accessories, fixtures, and vanity has been installed in this private restroom.



The metal lockers for the project were delivered and will be installed in the various labs in months ahead.

DID YOU KNOW?

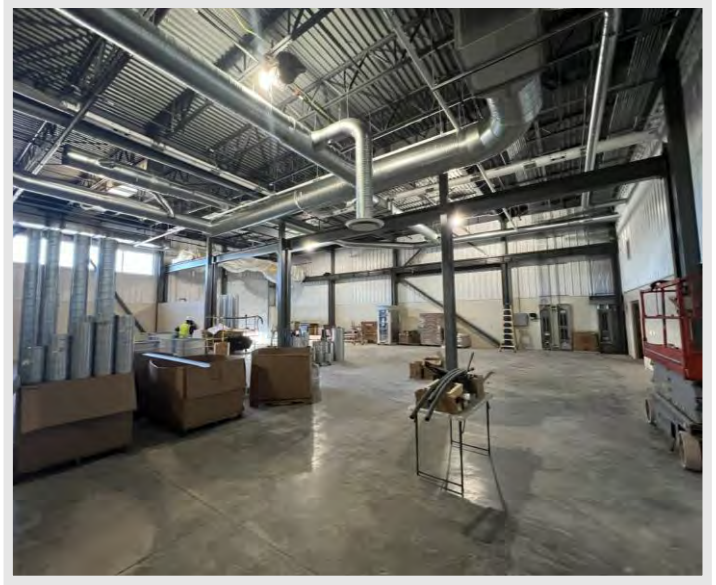
Spray-applied painting, like the work done to paint the roof deck of the Machine Tool Lab, is one of the most common methods of painting. Nearly all surfaces can be painted using the spraying method. It is useful on this project because there are several systems in place such as roof deck steel, electrical conduits, mechanical ductwork, plumbing piping/insulation, and more. Spraying provides a smooth, consistent finish on all of these surfaces.

Questions?

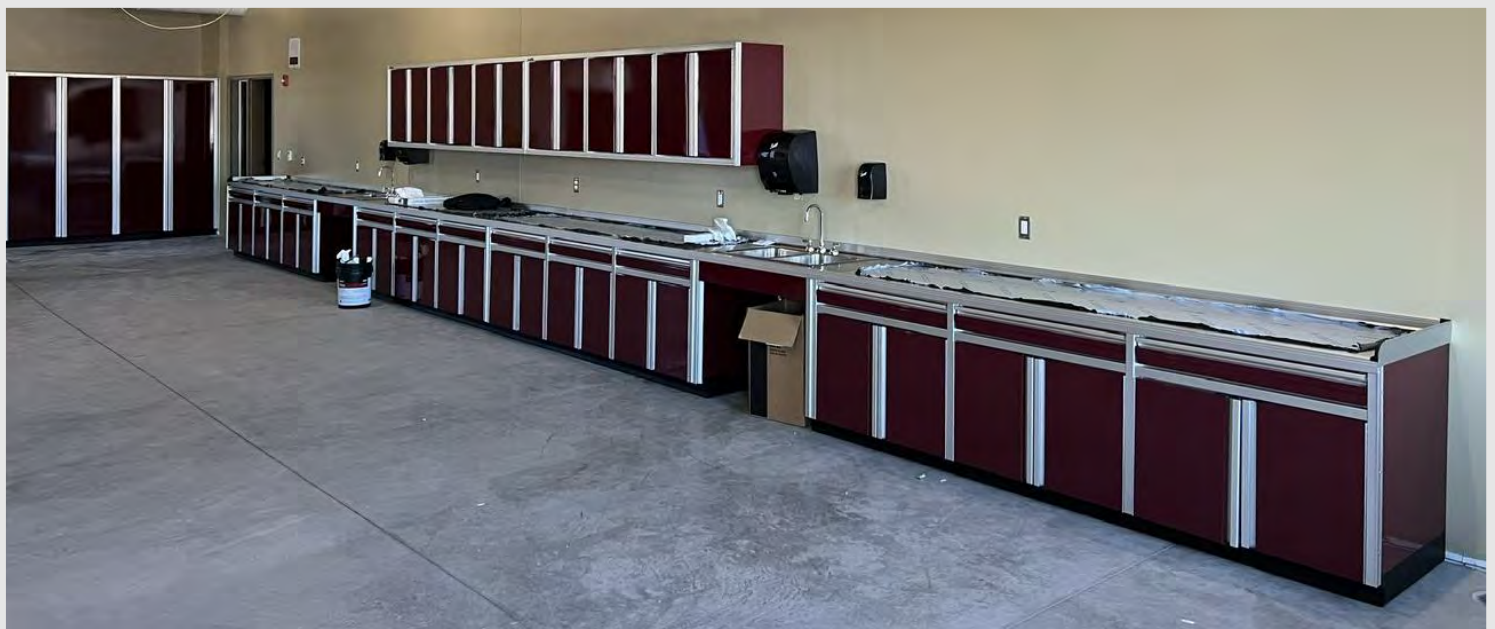
Project Manager, Matt McDonald / (608)-301-6169 / mmcdonald@findorff.com



Temporary switchgear was installed on the project to provide temporary power throughout the building.



Mechanical, electrical, and plumbing rough-ins are ongoing in the large lab spaces, such as the Welding & Metal Fab. Lab above.



The aluminum casework was installed throughout the project over the past week – look at that Mid-State red stand out!

Questions?

Project Manager, Matt McDonald / (608)-301-6169 / mmcdonald@findorff.com