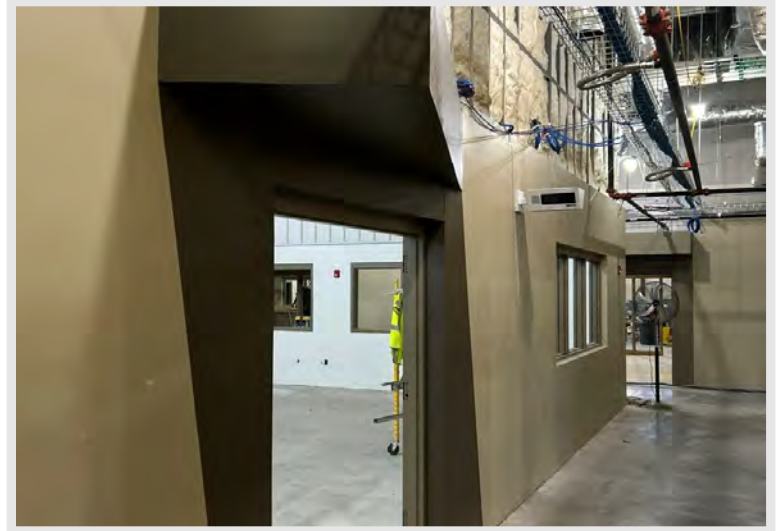


What's Happening:

A lot is happening as work picks back up after the New Year! Mechanical, Electrical, Plumbing, and Fire Protection (MEPF) trades are working to install their drops to the ceiling grid as it makes its way throughout the building and working on installs throughout the lab spaces. Additionally, the Electrician has started hanging lighting fixtures from the roof deck in rooms without ceilings. MEP trades have set their equipment on the pads that were recently poured in the back of house spaces. Soon we will see this equipment starting to connect to the various MEP systems.

The painter is continuing with painting throughout and we are seeing paint accents starting to give the building some character. The painters have also continued sealing floors throughout the building. Much of the laminate casework has been installed throughout the building in the past weeks. In the coming weeks we will see bathroom partitions begin. Interior metal liner panel install has completed in the lab spaces.

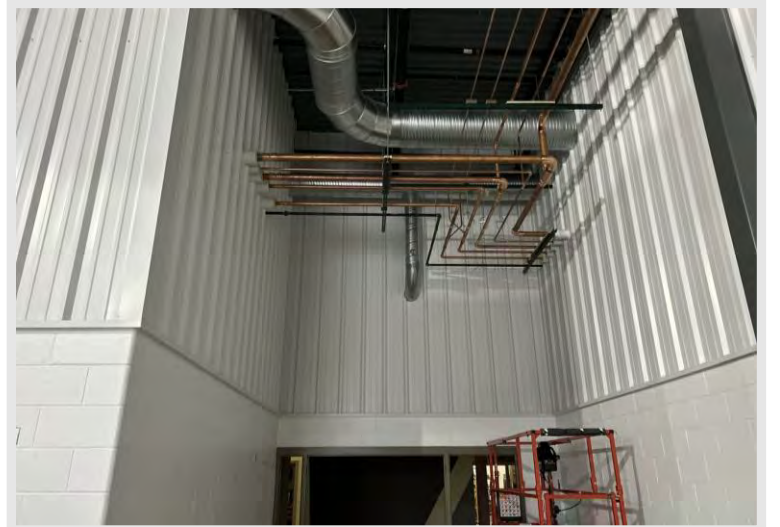
The Findorff team wishes everyone a Happy New Year!



Painting accents have started to appear throughout the project!



Ceiling grid installation is finishing in sequence two of the project and continues into sequence three in the weeks ahead.



Mechanical, Electrical, and Plumbing rough-in's are continuing in the large lab spaces.

DID YOU KNOW?

Raised concrete pads, like the ones housing various mechanical, electrical, and plumbing equipment in the back of house spaces for this project, are common throughout the construction industry. The purpose is to provide protection from chemicals, dirt, dust, and water, generally allowing easier housekeeping. Additionally, it structurally helps to distribute the point loads of the equipment that is anchored.

Questions?

Project Manager, Matt McDonald / (608)-301-6169 / mmcdonald@findorff.com



Ductwork install is nearing completion in the Machine Tool Technician Lab, and the final drops and diffusers are being installed.



Over the past few weeks there has been MEP equipment set onto pads in the back of house spaces.



Casework has been installed throughout the building in the past couple weeks. Notice the upper and lower cabinets in the above photo.

Questions?

Project Manager, Matt McDonald / (608)-301-6169 / mmcdonald@findorff.com