

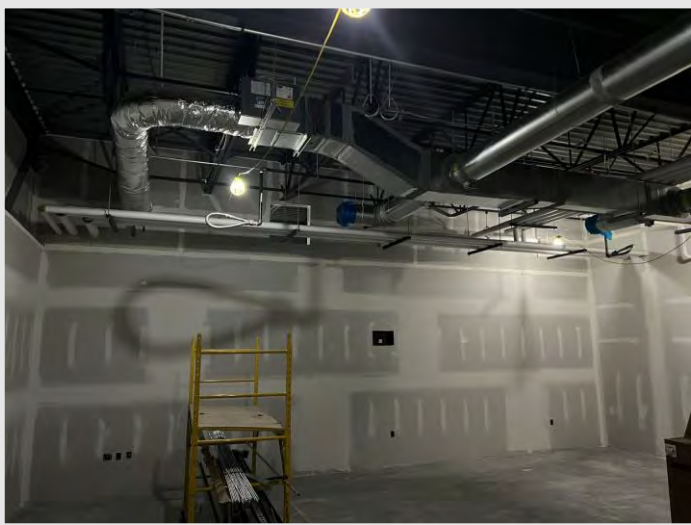
## What's Happening:

The trades are moving quickly on site! Progress continues inside the building as all wall framing is complete and drywall taping and finishing moving into sequence three of the building. Mechanical, electrical, plumbing, and fire protection trades continue overhead installation in sequence two of the project. The painters are in sequence one starting to bring out the Mid-State colors on the walls and will continue their work in the coming weeks. Tile has been installed in the east restrooms and work is ongoing in the west restroom areas. In the Welding and Metal Fab. Lab, the yellow bridge crane was installed.

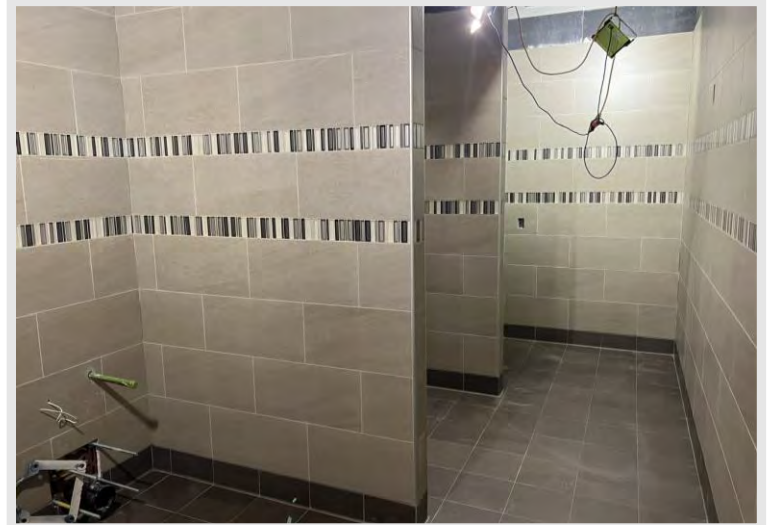
On the outside, it has been a rainy few weeks, but progress continues. The aluminum storefront openings are being installed at the entrances to permanently seal off the building. The exterior light poles are set into their final places around the site. Installation of the foam insulation at the upper atrium has started and will continue in the coming weeks. Soon the masonry around the building will be cleaned, caulked, and complete.



The yellow bridge crane stands out as it has been installed in the Welding and Metal Fab. Lab. It now awaits final connections.



Sequence 2 is ready for paint as the drywall finishing and sanding completes in this areas and moves to sequence 3.



Finish surfaces begin to show as the restrooms have started tile installation.

## DID YOU KNOW?

Ceramic tiling was first pioneered by the Chinese. The first tiles were small, plain white tiles that were dried in the sun and then heated over an open fire to harden. The Ancient Chinese were known to hand paint patterns on these tiles. Today, nearly all tile is machine-made with a manufacturing process that allows consistent size and aesthetics.

## Questions?

Project Manager, Matt McDonald / (608)-301-6169 / [mmcdonald@findorff.com](mailto:mmcdonald@findorff.com)

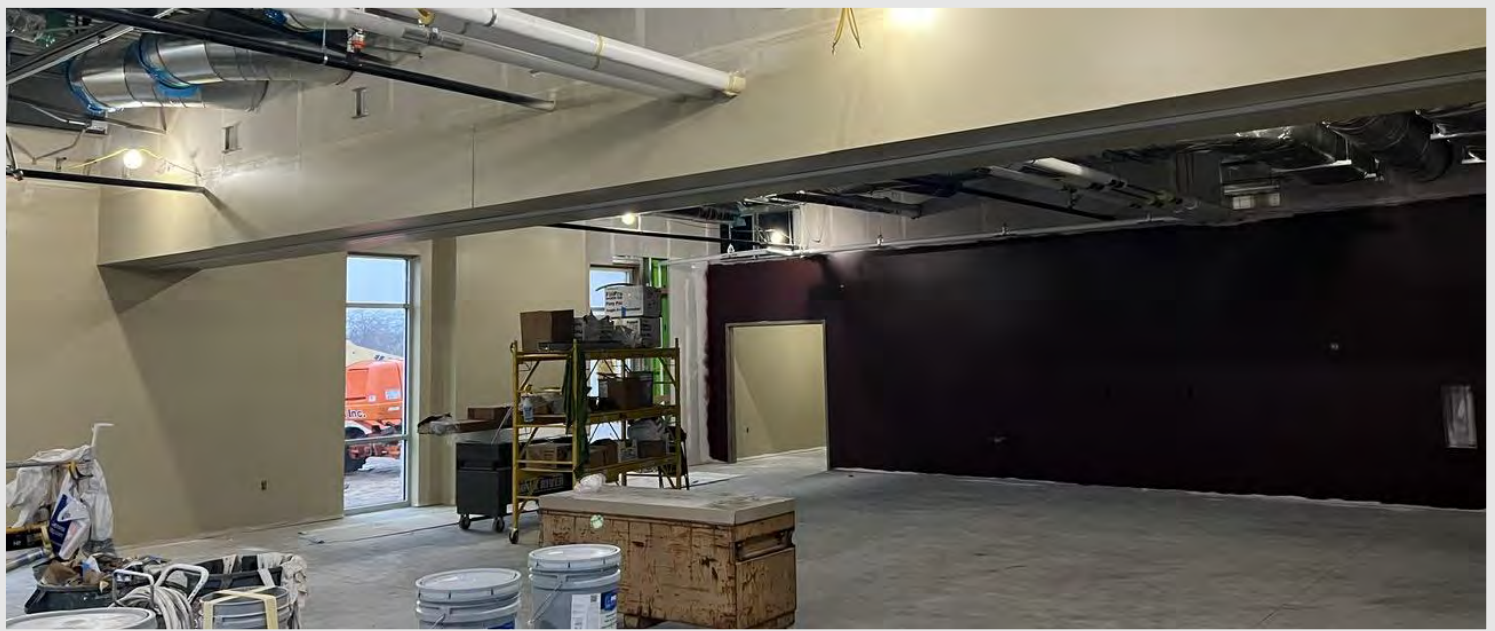




Exterior light poles have been set throughout the project site.



Aluminum storefront door installation is taking place at entrances.



Mid-State's colors are starting to show as Sequence 1 receives paint.

## Questions?

Project Manager, Matt McDonald / (608)-301-6169 / [mmcdonald@findorff.com](mailto:mmcdonald@findorff.com)