

What's Happening:

Interior masonry walls and metal stud framing is nearly complete, bringing the interior shape to life. Mechanical, electrical, and plumbing (MEP) trades are working on in-wall rough-ins and are moving in sequence from west to east in the building. Drywall and insulation has started working from the ceiling down in several areas without trade rough-ins. On the exterior, insulated metal panel installation has completed, and board insulation install has begun in preparation for metal panel. Aluminum storefront and glazing installation has begun at the openings around the building. On the site, concrete flatwork including stoops and sidewalks have begun.

The sequencing of interior work is coming as MEP rough-in work moving west to east continues so that insulation, drywall and taping can follow suit. As interior masonry walls are completed, the masons are moving back to the exterior brick and veneer work. Site preparation and site concrete continue in the next two weeks to make ready for the fine grading so asphalt crews can install the binder course. Exterior overhead door installation is in the coming weeks as enclosure of the building continues.



Nearly all masonry walls and cold formed metal framed (CFMF) walls have completed and rooms are taking shape.



Insulation and drywall has started working from the ceiling down in areas without in-wall mechanical, electrical, and plumbing (MEP) trades.



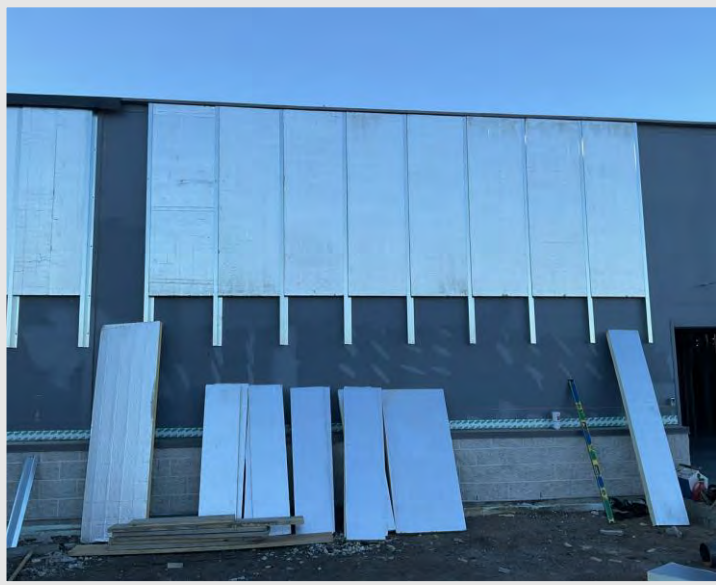
The interior is coming to life with architectural soffits and features being framed up.

DID YOU KNOW?

Architectural window glass was first used by the Romans around 100 A.D, up until that point in time windows consisted of materials like paper, cloth, or animal hides. These glass windows first used by Romans were comprised of very small panes, but today, we have progressed to use architectural window glass for much larger openings as seen on the project!

Questions?

Project Manager, Matt McDonald / (608)-301-6169 / mmcdonald@findorff.com



The installation of board insulation has begun in preparation for metal panel install as we continue to enclose the building.



Aluminum storefront and glazing has begun to be set at the atrium and is continuing around the building.



Site concrete has followed the installation of the curb and gutter with sidewalks, stoops, and drives now bringing the site towards its final state.

Questions?

Project Manager, Matt McDonald / (608)-301-6169 / mmcdonald@findorff.com