

MSTC's Password Reset Identity Management Portal – Instructions and Screenshots for Enrollment

What is MSTC's Password Reset Identity Management Portal?

This portal allows you to easily change your initial domain password, change your expiring domain password, reset your lost or forgotten domain password, or unlock your user account if it becomes locked out.

NOTE: Once you change your domain password (MSTC network account password) using this portal, you will use the new password to log into Blackboard, computers on MSTC campuses, and Live@edu.

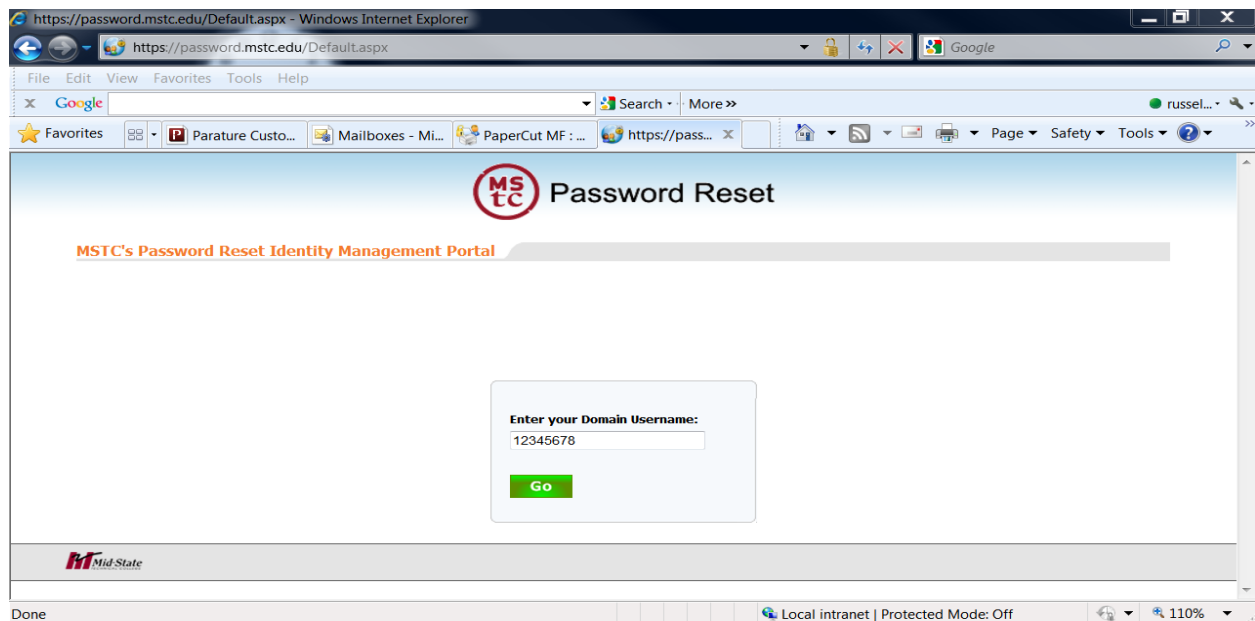
Instructions for enrolling in MSTC's Password Reset Identity Management Portal

Step 1:

Open an Internet browser and go to <https://password.mstc.edu>.

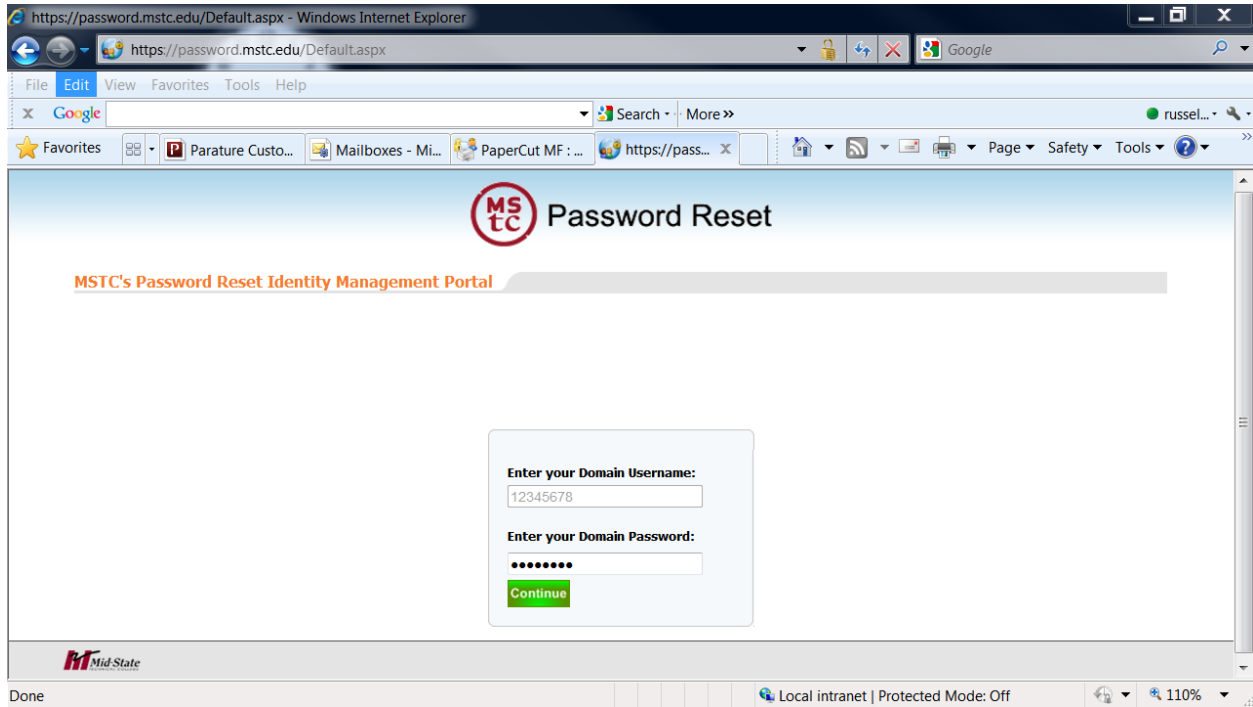
Step 2:

Enter your Domain Username (8-digit ID#). Click Go.



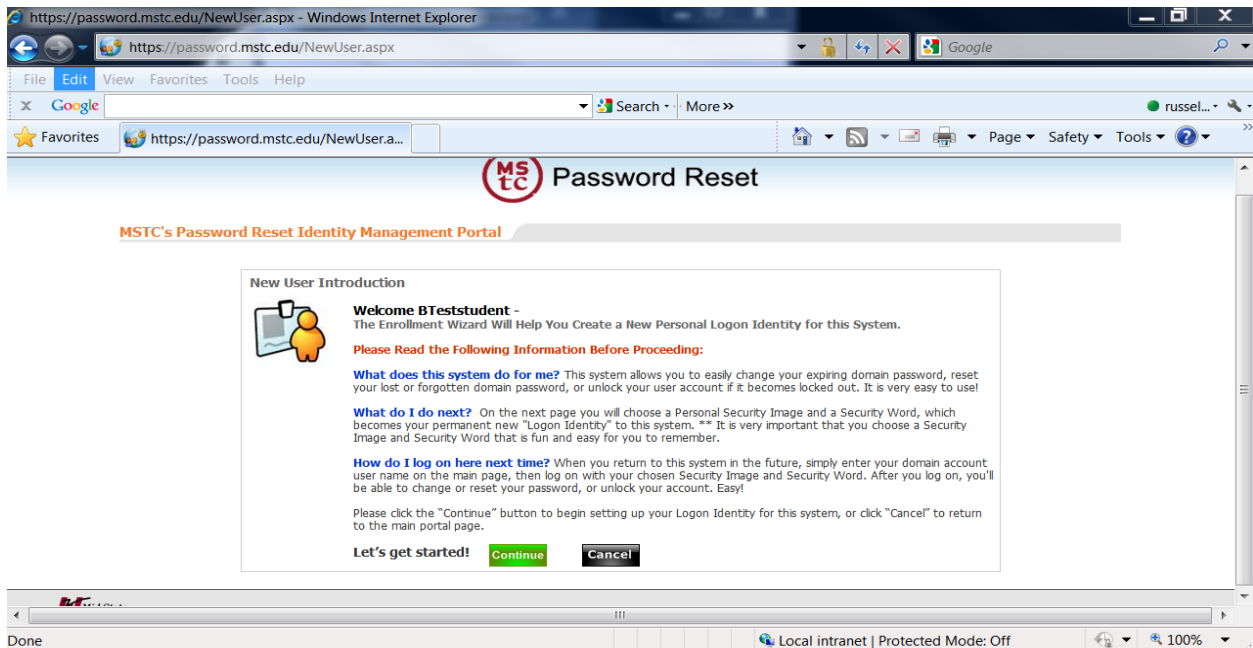
Step 3:

Enter your Domain Password. If you have already set your MSTC network account password, enter it here; otherwise, enter in your initial MSTC network account password (usually your 8-digit ID#) or the temporary password given to you by the help desk. Click Continue.



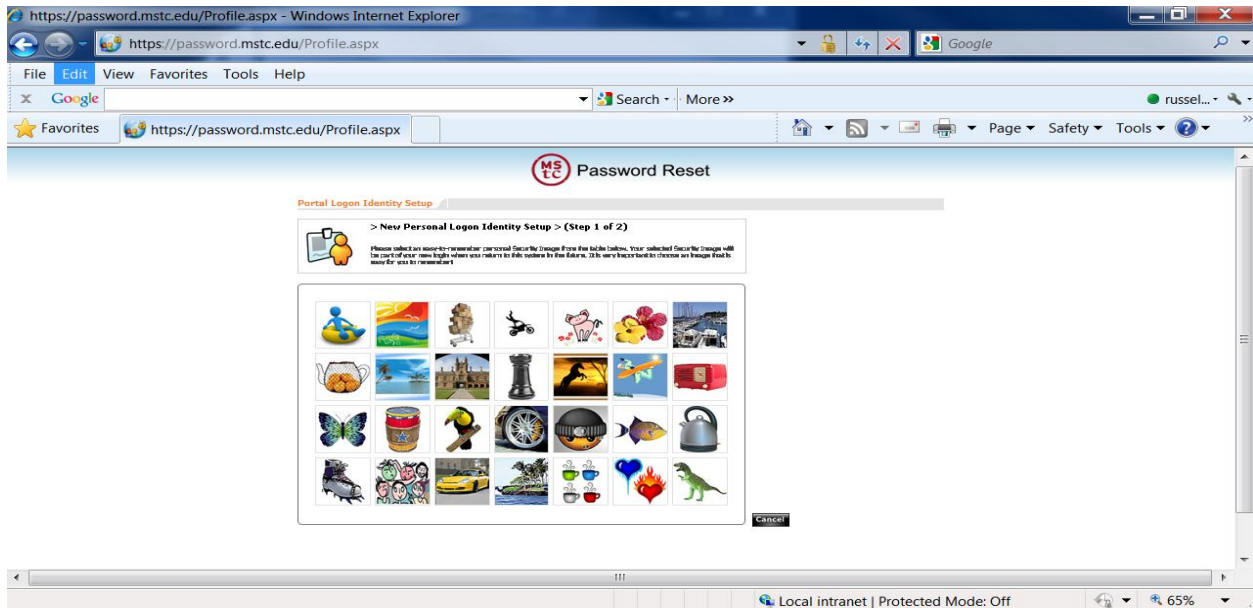
Step 4:

Read the screen, then click Continue.



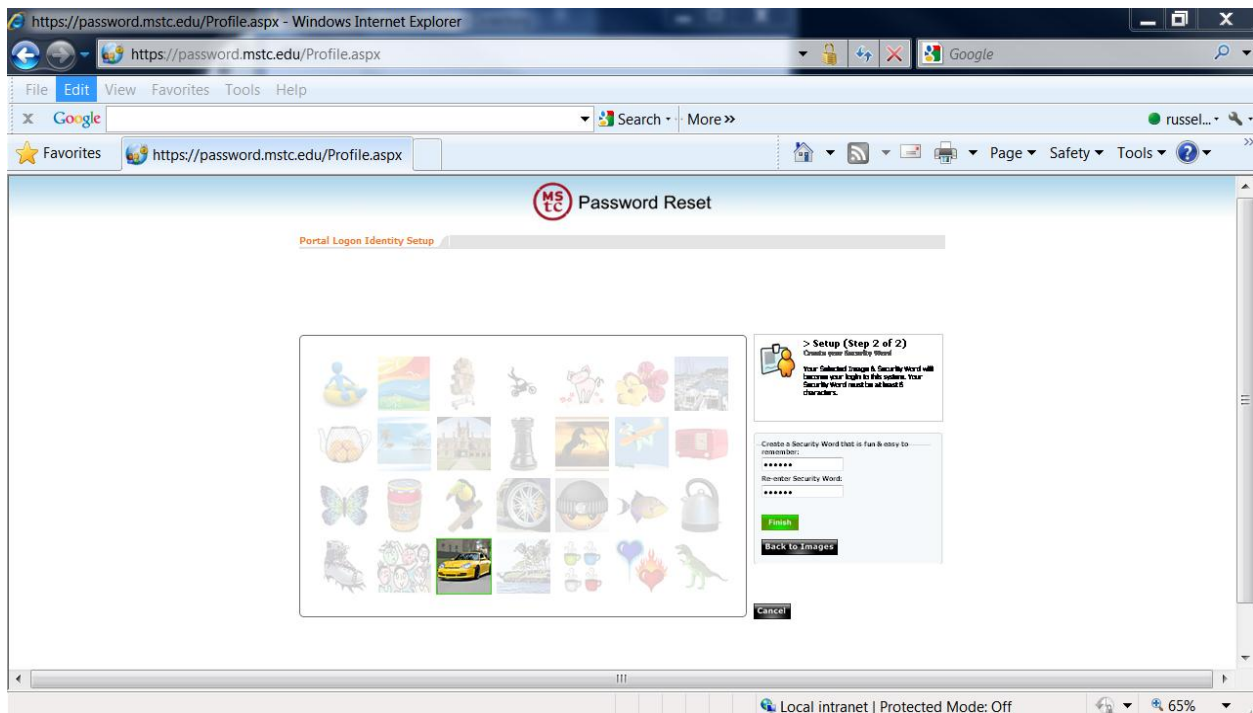
Step 5:

Choose a Security Image. **Note: You will need to remember this Security Image for signing into this portal in the future.**



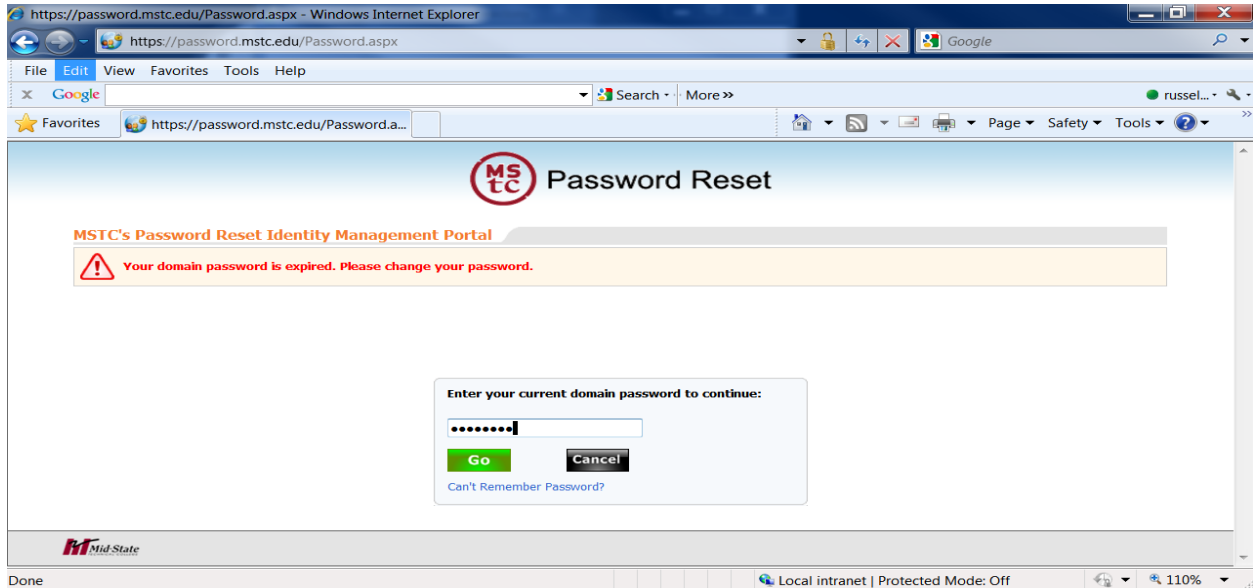
Step 6:

Enter a Security Word. **NOTE: The Security Word is not your MSTC network account password, Live@edu password, or Blackboard password. It is a Security Word that you create and will need to remember for signing into this portal in the future. Click Finish.**



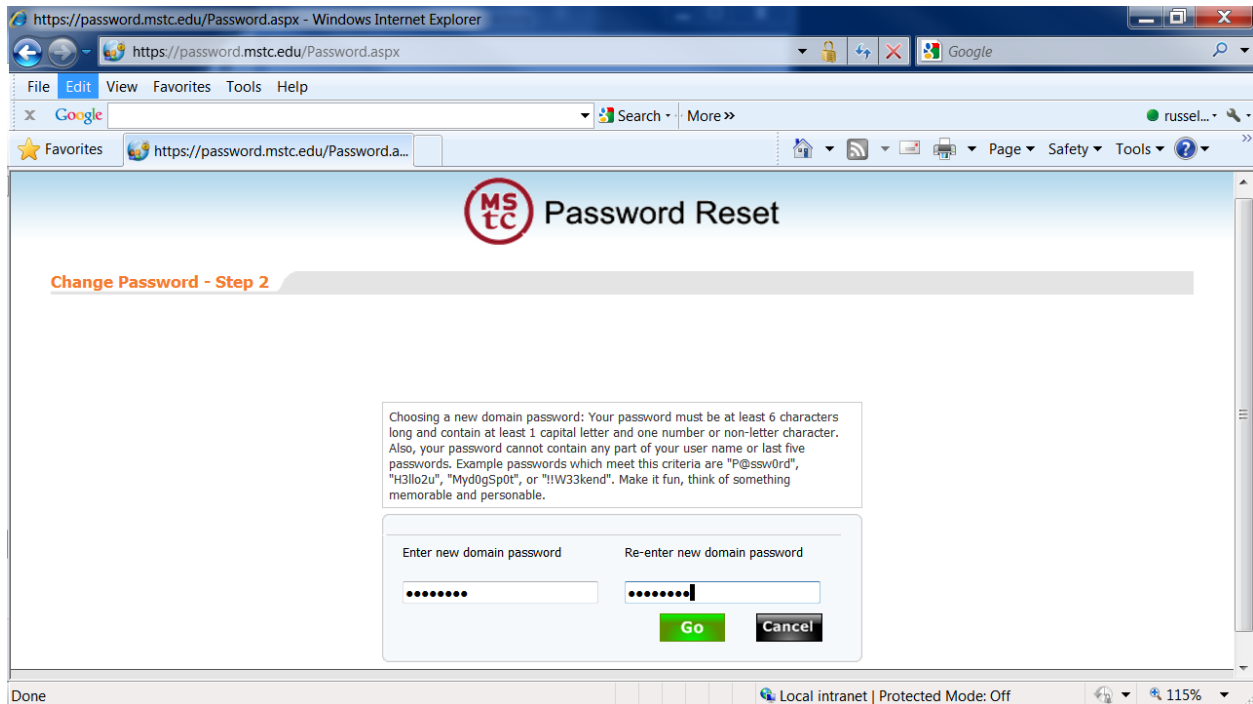
Step 7:

If you have already set your MSTC network account password, proceed to **Step 9**. Otherwise, enter in your initial MSTC network account password (usually your 8-digit ID#) or the temporary password given to you by the help desk. Click Go.



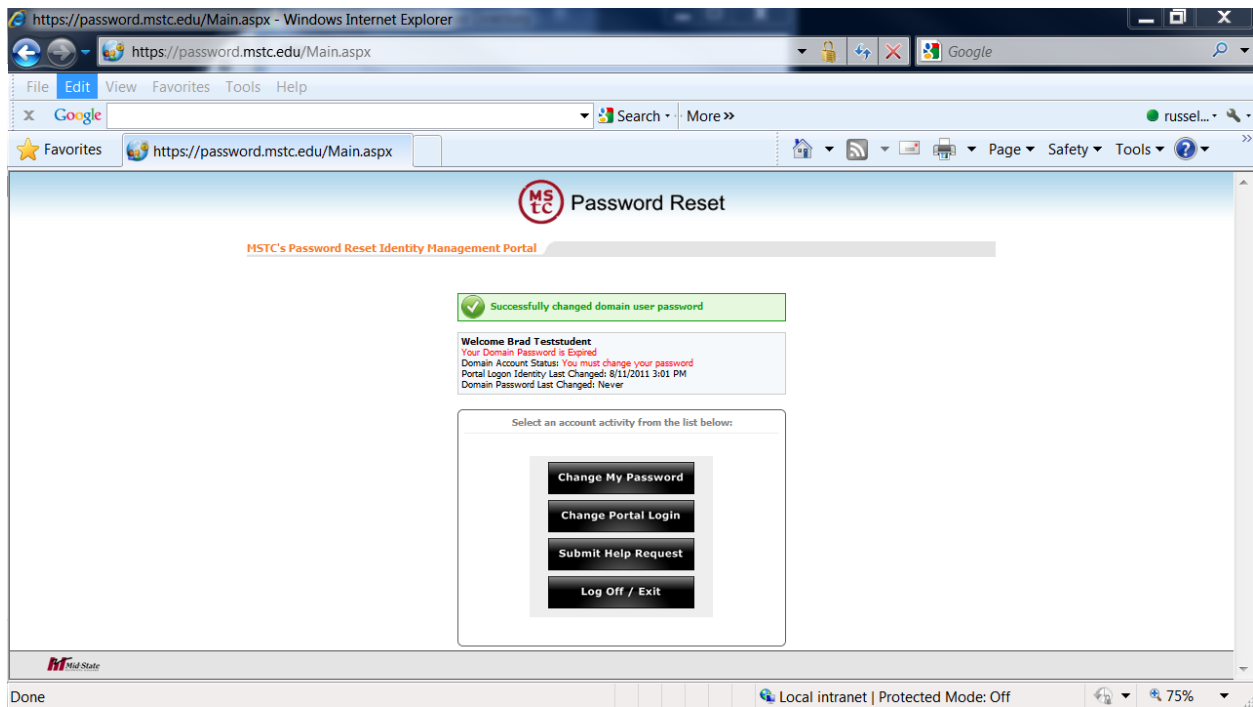
Step 8:

Enter in a new Domain Password. **Note: This is the password you will use to log into MSTC computers, Live@edu, and Blackboard.** Click Go.



Step 9:

From here you can choose any of the options from the buttons below, or simply click the Log Off / Exit button.



The screenshot shows a web browser window titled "https://password.mstc.edu/Main.aspx - Windows Internet Explorer". The address bar shows "https://password.mstc.edu/Main.aspx". The page content includes:

- Logo: MSTC Password Reset
- Header: MSTC's Password Reset Identity Management Portal
- Message: Successfully changed domain user password
- Welcome: Welcome Brad Teststudent
- Alert: Your Domain Password is Expired
- Status: Domain Account Status: You must change your password
- Logon Info: Portal Logon Identity Last Changed: 8/11/2011 3:01 PM
- Change Info: Domain Password Last Changed: Never
- Options: Select an account activity from the list below:
 - Change My Password
 - Change Portal Login
 - Submit Help Request
 - Log Off / Exit

The browser status bar at the bottom shows "Done", "Local intranet | Protected Mode: Off", and "75%".