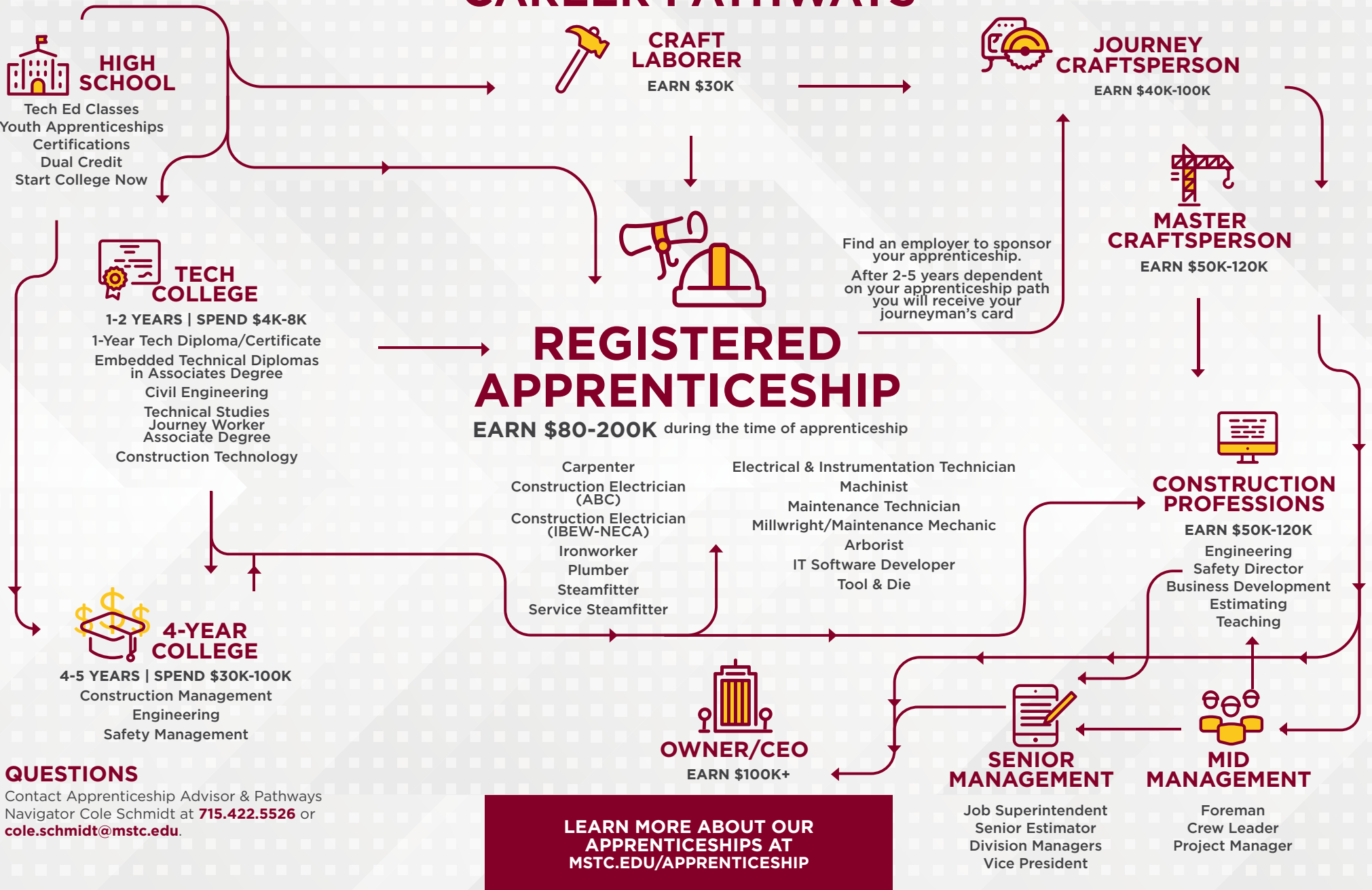


CAREER PATHWAYS



QUESTIONS

Contact Apprenticeship Advisor & Pathways Navigator Cole Schmidt at **715.422.5526** or cole.schmidt@mstc.edu.

LEARN MORE ABOUT OUR APPRENTICESHIPS AT MSTC.EDU/APPRENTICESHIP

LOOKING FOR POTENTIAL EMPLOYERS? START HERE!

dwd.wisconsin.gov/apprenticeship/featured.htm



mstc.edu • 888.575.6782 • TTY: 711



Mid-State does not discriminate on the basis of race, color, national origin, sex, disability, or age in its program, activity, or employment. The following person has been designated to handle inquiries regarding the nondiscrimination policies: Vice President - Human Resources; 500 32nd Street North, Wisconsin Rapids, WI 54494; 715.422.5325 • AAEO@mstc.edu. 10/2022